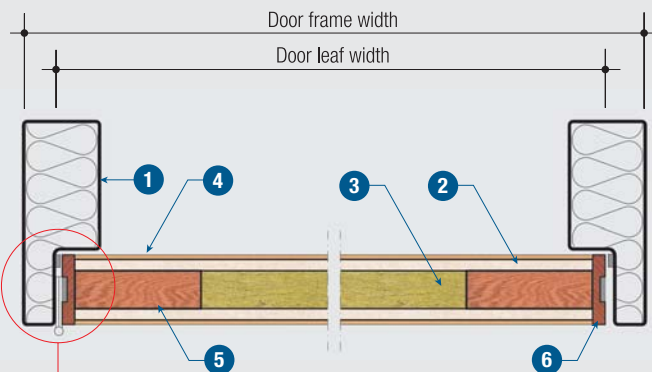


**Detail 1** Elevation



**Detail 3**

**Detail 2** Horizontal section (Section A-A)

PROMADOOR: PMF1 doorset is constructed throughout of Promat materials. Due to the nature of the construction of this doorset, it is possible to apply surface mouldings to the face of the door, thus creating the visual impact of panel door systems, without affecting the fire performance of this doorset.

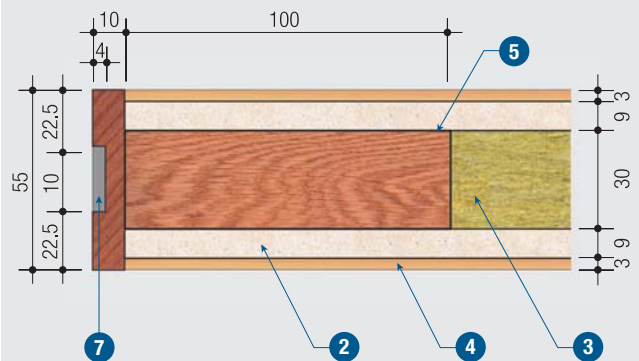
The nature of this door construction allows freedom of choice for the architects to use any type of laminate on the door surface that is desired.

PROMADOOR: PMF1 was subject to fire tests with the inclusion of surface mounted door closers. Therefore care should be taken to include these within the installation.

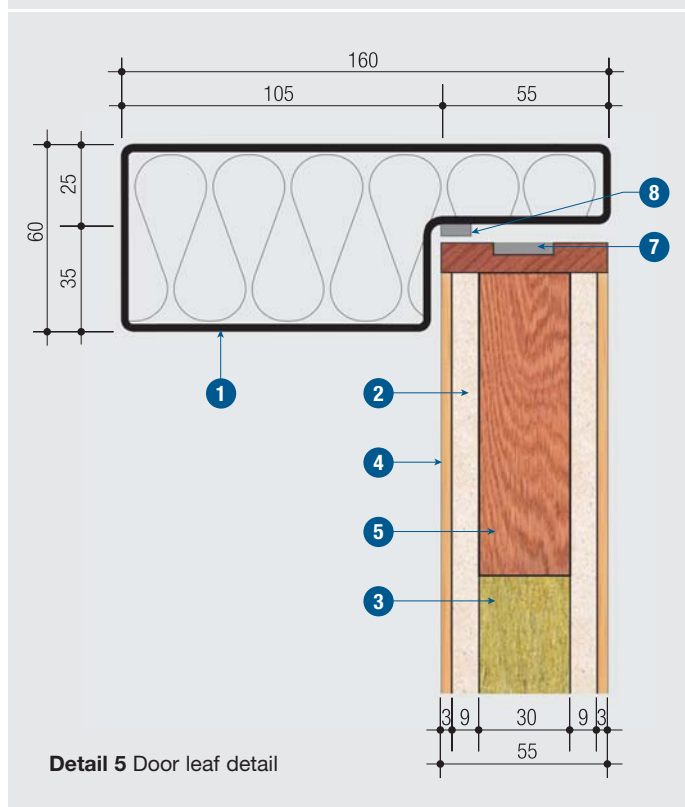
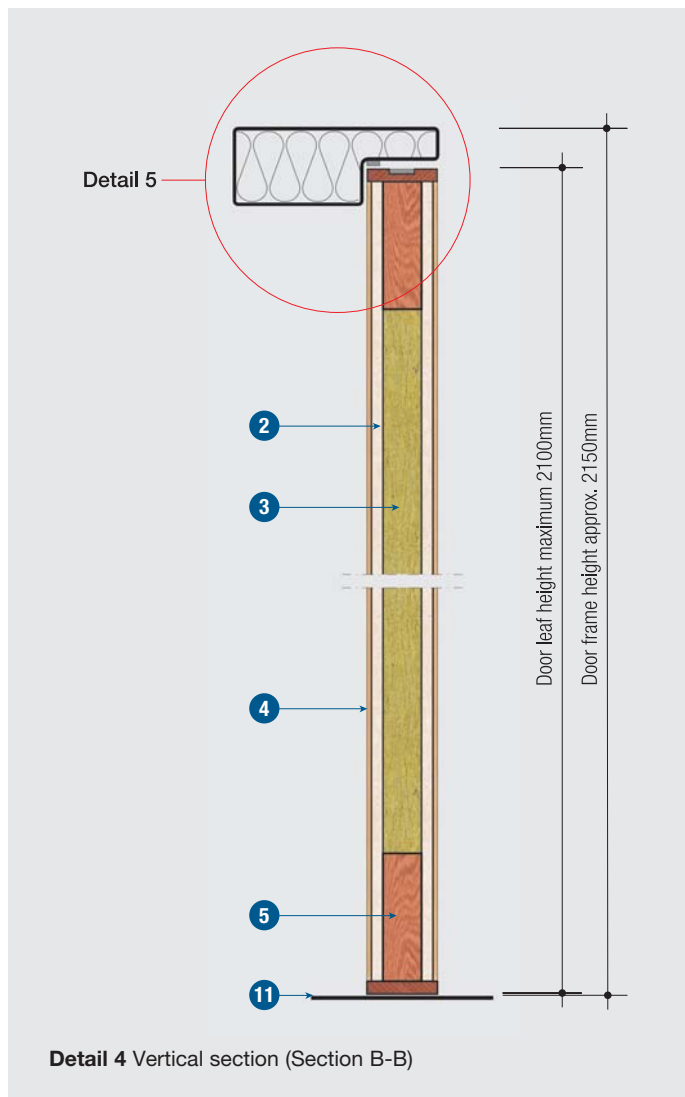
The door system was tested using a steel Mortise latch set with a steel knob set. Any lock set with dimensions and specification to the Union 3000 series can be used within this doorset.

Note should be taken that to ensure insulation across the door frame, both jambs and the head should be filled with a sand cement mortar mix.

[See next page for Technical Data on drawings](#)



**Detail 3** Door frame detail



#### TECHNICAL DATA

2 hours fire rating, integrity and insulation in accordance with the criteria of BS 476: Part 22: 1987 and Report 212 (1)/FR/2003; insulation on door leaf only.

- 1 Steel door frame  
160mm x 60mm x 1.6mm thick
- 2 PROMINA® 60 board 9mm thick
- 3 Fire rated insulation ceramic fibre blankets  
30mm thick x 96 kg/m<sup>3</sup> with  
fire rated PROMASEAL® Acrylic Sealant  
1mm thick on both sides
- 4 Decorative plywood facing 3mm thick
- 5 Perimeter stile and rails to door leaf  
100mm x 30mm
- 6 Teak beading 55mm x 10mm
- 7 PROMASEAL® Door Strip 20mm x 4mm thick  
on three sides of leaf
- 8 PROMASEAL® Door Strip 10mm x 4mm thick  
on head and jambs of frame
- 9 Stainless steel hinges screw fixed  
to the metal door frame, also screwed  
into the door leaf using 35mm x No.8 screws
- 10 Aluminium knob set
- 11 Floor

**NOTE:** The aperture into which the door is installed should have a fire resistance at least equal to that of the doorset itself. Care should be taken to ensure any gaps between the door frame and the aperture are thoroughly sealed to prevent the passage of smoke and hot gases. Please consult Promat Technical Department for details of the PROMASEAL® fire stopping range of products.